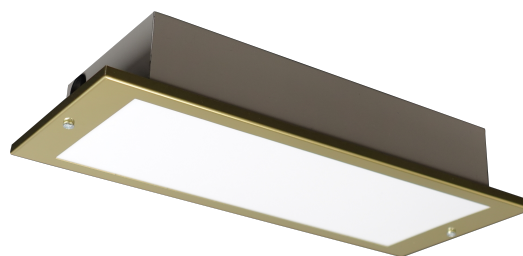
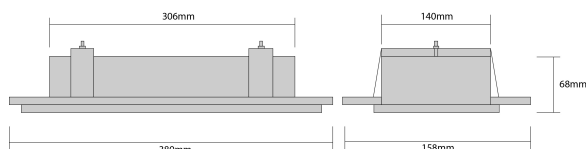


HOLLINSEND

HOLLINSEND LED Recessed Emergency
Bulkhead, Maintained/Non-maintained, 3.2V
LiFePO4 Battery, Brass, Opal Diffuser



GENERAL DATA

Light Source	LED
Light Source Replaceable	Yes
Colour/Finish	Brass
Material	Metal
Diffuser Type	Opal
Diffuser Material	Polycarbonate
IP Rating	IP20
Mounting Type	Recessed
Warranty (Years)	5
Life Time Hours	30,000

DIMENSIONS & WEIGHT

Length (mm)	380
Width (mm)	158
Depth (mm)	68
Weight (g)	1434

BLE LIGHTING AND POWER LTD

Unit 3, Drake Business Park, Drake House Crescent, Sheffield, S20 7HT

T: 01246 432325, E: sales@blelighting.co.uk, W: www.blelighting.co.uk

This document is uncontrolled if printed, all information is subject to change. Generated on 09/01/24

ELECTRICAL

Input Voltage (V)	220-240
Input Frequency (Hz)	50
Wattage (W)	3
Classification	Class I
Operating Temperature (°c)	0 to +40
Power Factor	0.92

OPTICAL

Colour Temperature	5000K
CRI	80
Beam Angle (°)	120
Lumen Output Mains (lm)	250

EMERGENCY

Battery Type	LiFePO4 3.2V
Battery Capacity	2.0Ah
Battery Warranty (Years)	5
Recharge Time (hrs)	24
Battery Replaceable	Yes
Mode Of Operation	Maintained / Non-maintained
Test Procedure	Manual
Emergency Duration (Hrs)	3
Lumen Output Emergency (lm)	105

STANDARDS & APPROVALS

Manufactured in Accordance with	BS EN 60598-1, BS EN 60598-2-22
CE Mark	Yes
UKCA Mark	Yes
WEEE Symbol	Yes
Accredited Members	ISO 9001, IIA, ICEL

PACKAGING

Packaging Length (mm)	390
Packaging Width (mm)	170

BLE LIGHTING AND POWER LTD

Unit 3, Drake Business Park, Drake House Crescent, Sheffield, S20 7HT
T: 01246 432325, E: sales@blelighting.co.uk, W: www.blelighting.co.uk

This document is uncontrolled if printed, all information is subject to change. Generated on 09/01/24



Packaging Depth (mm)

97

Spacing Tables

3HR EMERGENCY	ESCAPE ROUTE 2 METRES WIDE (1 LUX MIN)			
Mounting Height (M)	Transverse to Wall	Transverse to Transverse	Axial to Wall	Axial to Axial
2.5m	3.1	7.5	1.8	4.7
3.0m	3.6	8.4	1.8	5.0
4.0m	1.4	8.2	0.1	4.9

3HR EMERGENCY	OPEN (ANTI-PANIC) AREA (0.5 LUX MINIMUM)			
Mounting Height (M)	Transverse to Wall	Transverse to Transverse	Axial to Wall	Axial to Axial
2.5m	3.8	8.3	2.3	6.1
3.0m	4.2	9.7	2.5	6.4
4.0m	4.9	11.5	2.6	7.0

BLE LIGHTING AND POWER LTD

Unit 3, Drake Business Park, Drake House Crescent, Sheffield, S20 7HT
T: 01246 432325, E: sales@blelighting.co.uk, W: www.blelighting.co.uk

This document is uncontrolled if printed, all information is subject to change. Generated on 09/01/24